

# Mechanical Seals OEM



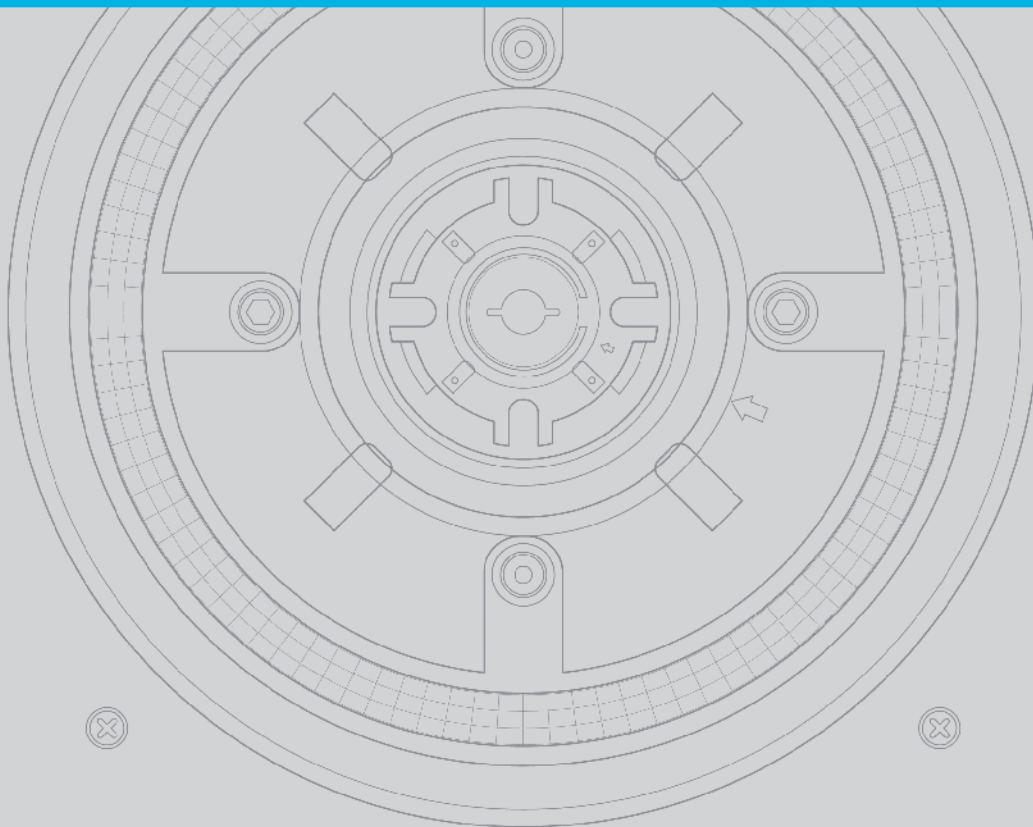


GROUPE LATTY, with its experience in the dynamic sealing, offers a new range of products adapted to the needs of maintaining services for rapid repair of your process pumps. This range is distributed through its service centers specialized in the repair and reconditioning of Mechanical Seals.

The service centers MECASEAL and MECANETANCHE, have a stock and a logistics platform, ensuring timely delivery of your products. Their technicians are at your disposal to advise you on the selection and recommendation of Mechanical Seals.



# OEM RANGE







## ALFA LAVAL®

Pump type	Designation	Page
CM 1, 1A, 1B, 1C, 1D, GM 1, 1A, 2, 2A, EM 1C, EM 1D	LI AL1 022	6
FM 0S, 0, 1, 1A, 1AE, 2, 2A, 3, 3A, 4 et 4A	LI AL2 022	7
MR 185, 185A, 200 et 200A	LI AL3 027	8
LKH 10, 15, 20, 25, 35, 40, 45, 50 et 60	LI AL4 032	9
LKH 70, LKH 80	LI AL5 042	10
ALC1 (1.5kw-4kw)	LI AL ALC 040	11
ALC1 (5.5kw-7.5kw), ALC2 (5.5kw-18.5kw), ALC3 (5.5kw-18.5kw)	LI AL ALC 053	11
ALC3 (22kw)	LI AL ALC 060	11
ALFA LAVAL Contherm	LI ALCO	12

## GRUNDFOS®

Pump type	Designation	Page
CR, CR8, CRI, CRN1, CRN3, CRN5, CRNE1, CRNE3-23HS	LI GS 012	30
CR, CRI, CRN10, CRN15, CRN20	LI GS 016	30
CR, CRN32, CRN45, CRN64, CRN90	LI GS 022	30

## SIHI®

Designation	Page
LI SID	31

## APV®

Pump type	Designation	Page
PUMA	LI AV	13
W 20/20, 25/75, 30/25, 30/50, 40/20, 50/25	LI AVW 025	14
W 30/100, 50/50, 50/100, 60/300, 70/30, 80/50, 100/130	LI AVW 035	14
W+ 10/8, 22/20, 30/80, 35/35, 35/55, 50/8, 55/35	LI AVW+ 025	15
W+ 25/210, 30/120, 30/180, 55/60, 60/110, 65/350, 70/40, 80/80, 110/130	LI AVW+ 035	15

## Other

Designation	Page
TYPE 511	32
TYPE 513	33
TYPE 521	34
TYPE 522	35
TYPE 523	36
TYPE 524	37
TYPE 525	38
TYPE 526	39
TYPE 527	40
TYPE 534	41

## KSB®

Pump type	Designation	Page
ETANORM, ETABLOC, ETACHROM...	LI KB	16

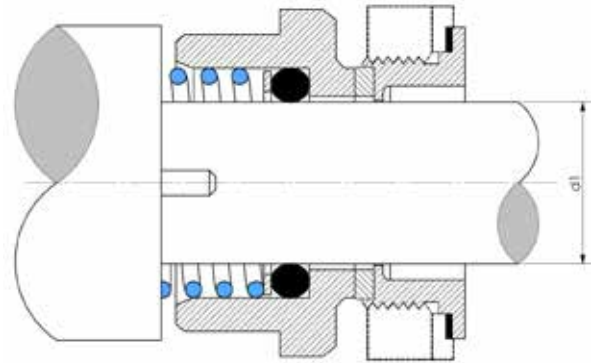
## FRISTAM®

Pump type	Designation	Page
FRISTAM® pumps mounting		17
Rotary		
FP / FL / FT...	LI FMT1	18
FP / FL / FT...	LI FMT2	19
FP / FL / FT...	LI FMT3	20
FP / FL / FT...	LI FMT4	21
FP / FL / FT...	LI FMT5	22
FP / FL / FT...	LI FMT6	23
Seat		
FP / FL / FT...	LI FMF1	24
FP / FL / FT...	LI FMF2	25
FP / FL / FT...	LI FMF3	26
FP / FL / FT...	LI FMF4	27
FP / FL / FT...	LI FMF5	28
FP / FL / FT...	LI FMF6	29

FDA / WRAS seals and other pump types on request.



# ALFA LAVAL® - LI AL1

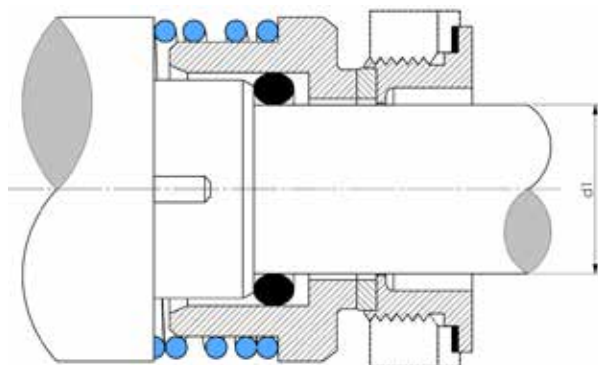


Pump type	Codification	Designation	d1
CM 1, 1A, 1B, 1C, 1D, GM 1, 1A, 2, 2A. EM 1C, EM 1D	LI-10100	LI AL1 022 B S2 E	22
	LI-10101	LI AL1 022 B U3 E	
	LI-10102	LI AL1 022 U3 U3 E	

## Materials :

- Seat : Stainless steel (S2) or Silicon Carbide (U3)
- Rotary : Carbon (B) or Silicon Carbide (U3)
- Elastomer : EPDM (E)
- Spring : Stainless steel

# ALFA LAVAL® - LI AL2

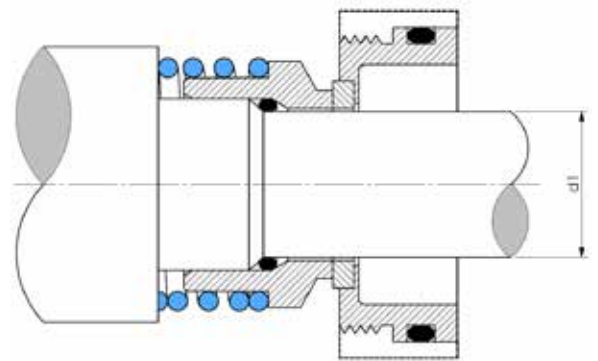


Pump type	Codification	Designation	d1
FM 0S, 0, 1, 1A, 1AE, 2, 2A, 3, 3A, 4 & 4A	LI-10103	LI AL2 022 B S2 E	22
	LI-10104	LI AL2 022 B U3 E	
	LI-10105	LI AL2 022 U3 U3 E	

## Materials :

- Seat : Stainless steel (S2) or Silicon Carbide (U3)
- Rotary : Carbon (B) or Silicon Carbide (U3)
- Elastomer : EPDM (E)
- Spring : Stainless steel

# ALFA LAVAL® - LI AL3



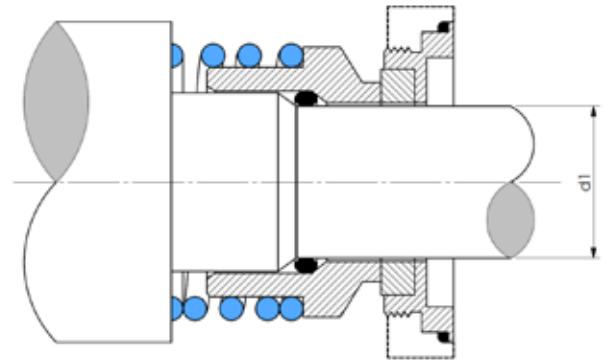
Pump type	Codification	Designation	d1
MR 185, 185A, 200 & 200A	LI-10106	LI AL3 027 B S2 E	27
	LI-10107	LI AL3 027 B U3 E	
	LI-10108	LI AL3 027 U3 U3 E	

## Materials :

- Seat : Stainless steel (S2) or Silicon Carbide (U3)
- Rotary : Carbon (B) or Silicon Carbide (U3)
- Elastomer : EPDM (E)
- Spring : Stainless steel



# ALFA LAVAL® - LI AL4

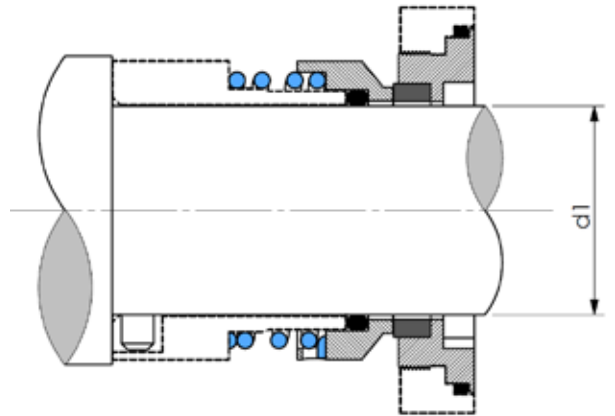


Pump type	Codification	Designation	d1
LKH 10, 15, 20, 25, 35, 40, 45, 50 & 60	LI-10109	LI AL4 032 B S2 E	32
	LI-10110	LI AL4 032 B U3 E	
	LI-10111	LI AL4 032 U3 U3 E	

## Materials :

- Seat : Stainless steel (S2) or Silicon Carbide (U3)
- Rotary : Carbon (B) or Silicon Carbide (U3)
- Elastomer : EPDM (E)
- Spring : Stainless steel

# ALFA LAVAL® - LI AL5

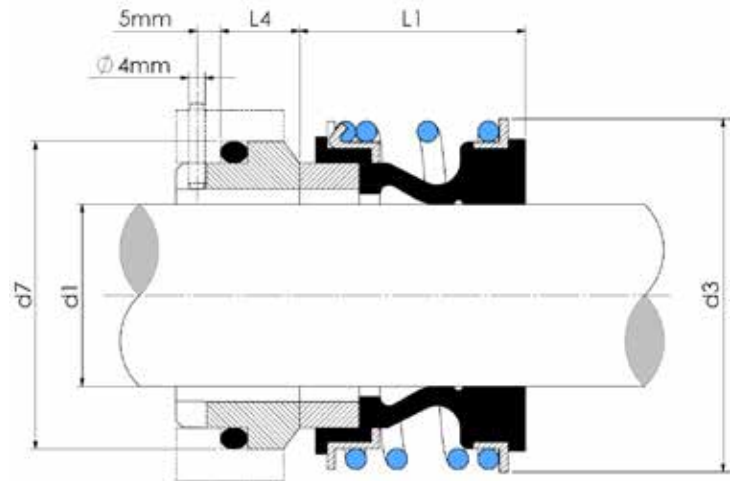


Pump type	Codification	Designation	d1
LKH 70 et 80	LI-10125	LI AL5 042 B S2 E	42
	LI-10126	LI AL5 042 B U3 E	
	LI-10127	LI AL5 042 U3 U3 E	

## Materials :

- Seat : Stainless steel (S2) or Silicon Carbide (U3)
- Rotary : Silicon Carbide (U3) or Carbon (B)
- Elastomer : EPDM (E)
- Spring : Stainless steel

# ALFA LAVAL® - LI ALC

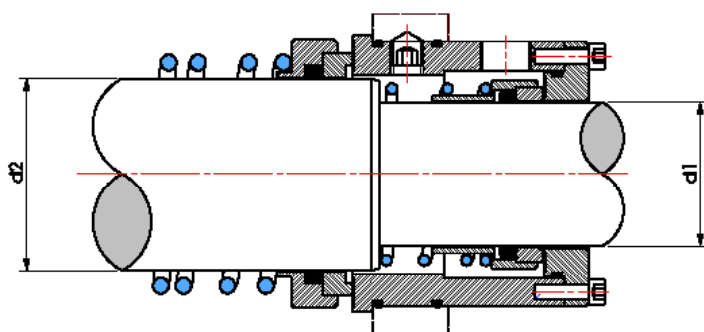


Pump type	Codification	Designation	d1	d3	d7	L1	L4
ALC1 (1.5kw-4kw)	LI-10112	LI AL ALC 040 B U3 E	40	60	58	30	14
	LI-10113	LI AL ALC 040 U3 U3 E					
	LI-10118	LI AL ALC 040 B U3 V					
ALC1 (5.5kw-7.5kw), ALC2 (5.5kw-18.5kw), ALC3 (5.5kw-18.5kw)	LI-10114	LI AL ALC 053 B U3 E	53	76	73	33	15
	LI-10115	LI AL ALC 053 U3 U3 E					
	LI-10119	LI AL ALC 053 B U3 V					
ALC3 (22kw)	LI-10116	LI AL ALC 060 B U3 E	60	85	80	38	15
	LI-10117	LI AL ALC 060 U3 U3 E					
	LI-10120	LI AL ALC 060 B U3 V					

## Materials :

- Seat : Silicon Carbide (U3)
- Rotary : Carbon (B) or Silicon Carbide (U3)
- Elastomer : EPDM (E) or VITON (V)
- Spring : Stainless steel

# ALFA LAVAL® - LI ALCO

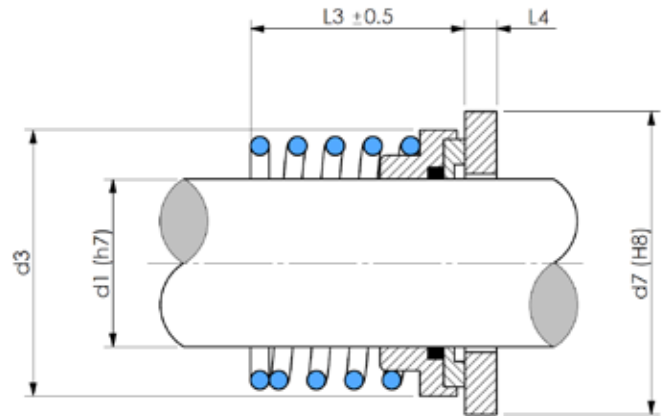


Pumps type	Codification	Designation	d1		d2	
			mm	"	mm	"
ALFA LAVAL Contherm Scraped surface heat exchanger	LI 10121	LI ALCO 38.1/50.8 B U3 E / B O E	38,10	1" 1/2	50,80	2

## Materials :

- Seat : Silicon Carbide (U3) and Chromium oxide (O)
- Rotary : Carbon (B)
- Elastomer : EPDM (E)
- Spring : Stainless steel

# APV® - LI AV



Pump type	Codification	Designation	d1		d3		d7		L3		L4	
			mm	"	mm	"	mm	"	mm	"	mm	"
PUMA	LI-10001	LI AV 1" B S2 E	25.4	1.000	41.2	1.622	68.2	2.685	25.4	1.000	7.80	0.307
PUMA	LI-10002	LI AV 1" U3 U3 E										
PUMA	LI-10003	LI AV 1,5" B S2 E	38.1	1.500	55.7	2.193	80.1	3.154	33.3	1.500	9.00	0.354
PUMA	LI-10004	LI AV 1,5" U3 U3 E										

	Codification	Dimension
SET OF O-RINGS	LI 10013	1"
	LI 10014	1" 1/2

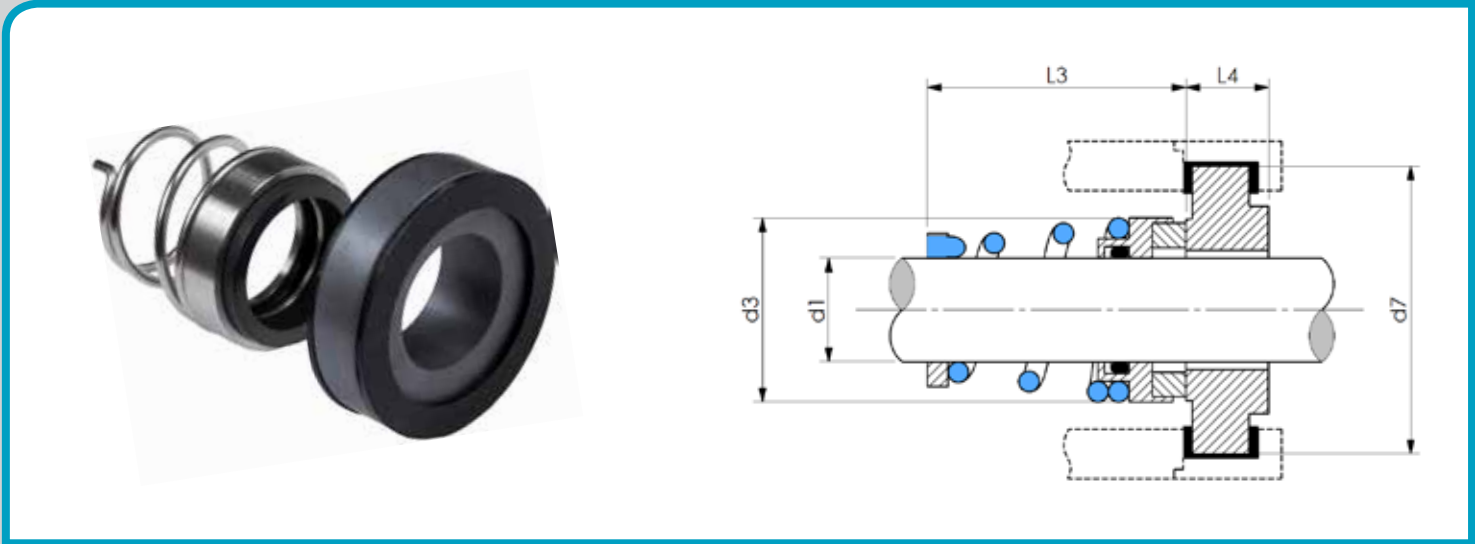
## Materials :

- Seat : Stainless steel (S2) or Silicon Carbide (U3)
- Rotary : Carbon (B) or Silicon Carbide (U3)
- Elastomer : EPDM (E)
- Spring : Stainless steel





# APV® - LI AVW

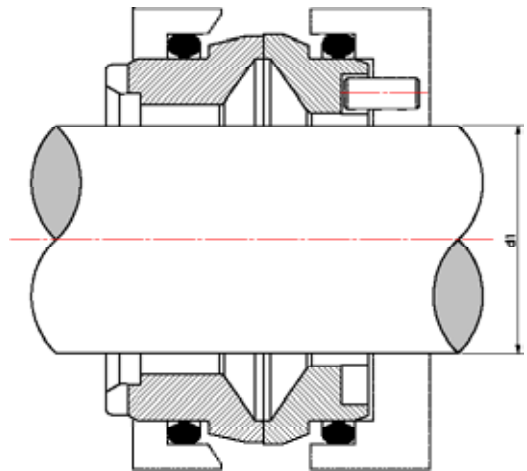


Pump type	Codification	Designation	d1	d7	d3	L3	L4
W 20/20, 25/75, 30/25, 30/50, 40/20, 50/25	LI-10005	LI AVW 025 B U3 E	25	52	38.2	25.4	16
	LI-10006	LI AVW 025 U3 U3 E					
W 30/100, 50/50, 50/100, 60/300, 70/30, 80/50, 100/130	LI-10007	LI AVW 035 B U3 E	35	62.5	49.5	33.3	16
	LI-10008	LI AVW 035 U3 U3 E					

**Materials :**

- Seat : Silicon Carbide (U3)
- Rotary : Carbon (B) or Silicon Carbide (U3)
- Elastomer : EPDM (E)
- Spring : Stainless steel

# APV® - LI AVW+



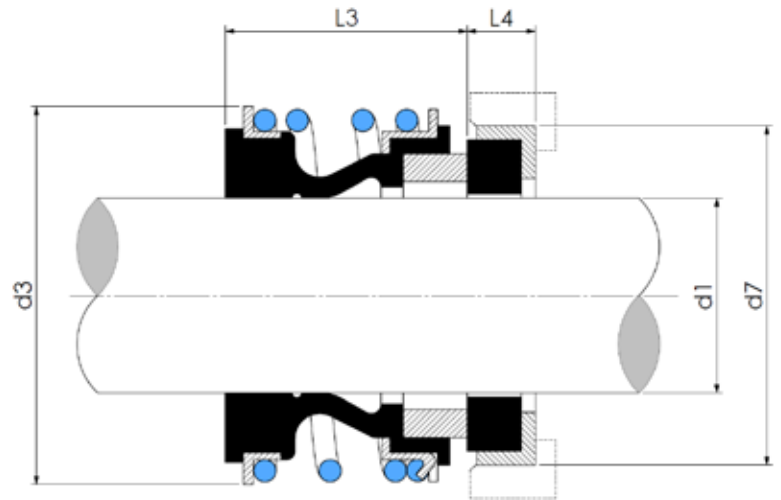
Pumps type	Codification	Designation	d1
W+ 10/8, 22/20, 30/80, 35/35, 35/55, 50/8, 55/35	LI-10009	LI AVW+ 025 B U3 E	25
	LI-10010	LI AVW+ 025 U3 U3 E	
W+ 25/210, 30/120, 30/180, 55/60, 60/110, 65/350, 70/40, 80/80, 110/130	LI-10011	LI AVW+ 035 B U3 E	35
	LI-10012	LI AVW+ 035 U3 U3 E	

## Materials :

- Seat : Silicon Carbide (U3)
- Rotary : Carbon (B) or Silicon Carbide (U3)
- Elastomer : EPDM (E)

*FDA approval and friction surfaces of tungsten carbide (U2) on request*

# KSB® - LI KB



Pump type	Codification	Designation	d1	d3	d7	L3	L4
ETANORM, ETABLOC, ETACHROM	LI-10500	LI KB 022 U3 U3 E	22	36	37	25,5	12,1
	LI-10504	LI KB 022 U3 U3 V					
	LI-10501	LI KB 028 U3 U3 E	28	47	43	36,5	14,4
	LI-10505	LI KB 028 U3 U3 V					
	LI-10502	LI KB 038 U3 U3 E	38	58	56	42	13,2
	LI-10506	LI KB 038 U3 U3 V					
	LI-10503	LI KB 048 U3 U3 E	48	69	66	50,5	9,6
	LI-10507	LI KB 048 U3 U3 V					

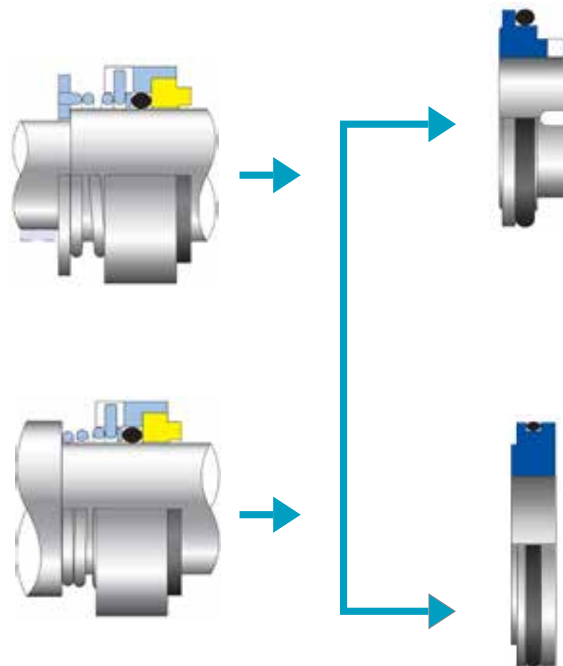
## Materials :

- Seat : Silicon Carbide (U3)
- Rotary : Silicon Carbide (U3)
- Elastomer : EPDM (E) or VITON (V)
- Spring : Stainless steel

# FRISTAM® PUMPS MOUNTING

## Simple Mechanical Seal Installation\*

\* Combinations of common arrangements

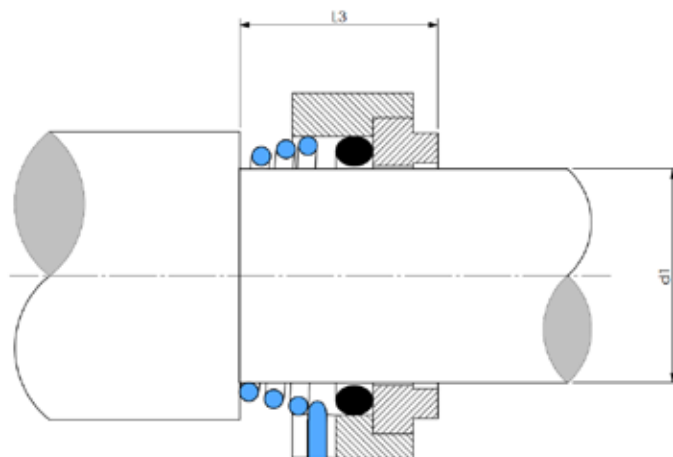


## Double Mechanical Seal Installation\*



\*Contact us for other combinations

# FRISTAM® - LI FMT1



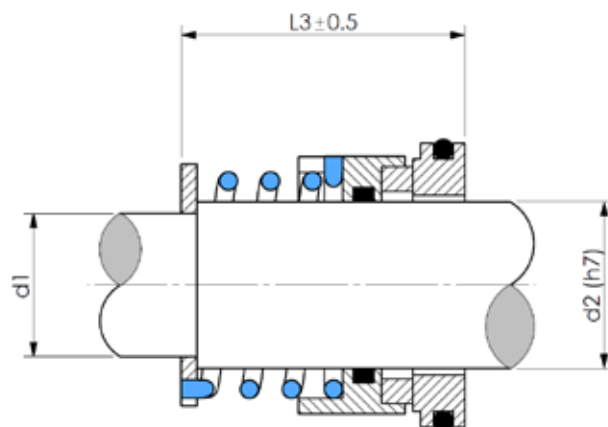
Pump type	Designation	Codification	d1	L3	Spring
FP / FL / FT...	LI FMT1 022 B E LH	LI-10300	22	20	LEFT
	LI FMT1 022 U3 E LH	LI-10301			LEFT
	LI FMT1 030 B E LH	LI-10302	30	22	LEFT
	LI FMT1 030 U3 E LH	LI-10303			LEFT
	LI FMT1 035 B E LH	LI-10304	35	26	LEFT
	LI FMT1 035 U3 E LH	LI-10305			LEFT
	LI FMT1 035 BE RH	LI-10343			RIGHT

## Materials :

- Rotary : Carbon (B) or Silicon Carbide (U3)
- Elastomer : EPDM (E)
- Spring : Stainless Steel



# FRISTAM® - LI FMT2



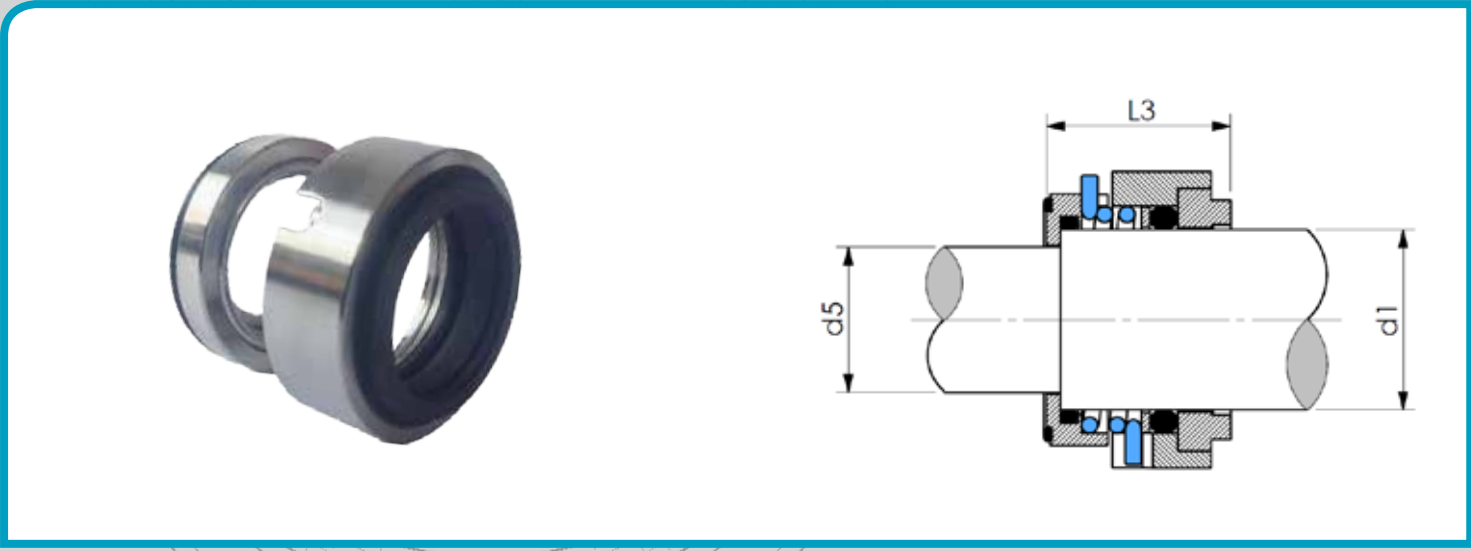
Pump type	Designation	Codification	d1	d2	L3
FP / FL / FT...	LI FMT2 022 B E	LI-10306	22	18	22
	LI FMT2 022 U3 E	LI-10307			
	LI FMT2 030 B E	LI-10308	30	22	24
	LI FMT2 030 U3 E	LI-10309			
	LI FMT2 035 B E	LI-10310	35	30	26
	LI FMT2 035 U3 E	LI-10311			

## Materials :

- Rotary : Carbon (B) or Silicon Carbide (U3)
- Elastomer : EPDM (E)
- Spring : Stainless Steel



# FRISTAM® - LI FMT3



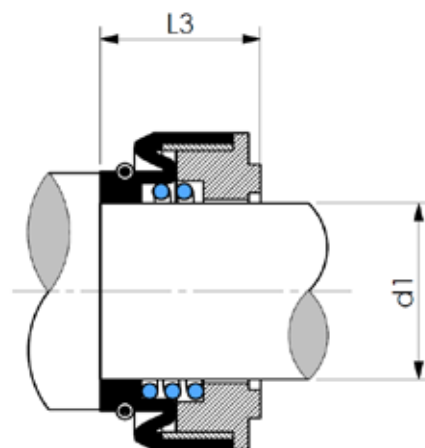
Pump type	Codification	Designation	d1	d5	L3
FP / FL / FT...	LI-10324	LI FMT3 022 B E	22	18	22
	LI-10326	LI FMT3 030 B E	30	22	24
	LI-10328	LI FMT3 035 B E	35	28	28

**Materials :**

- Rotary : Carbon (B)
- Elastomer : EPDM (E)
- Spring : Stainless Steel

# FRISTAM® - LI FMT4



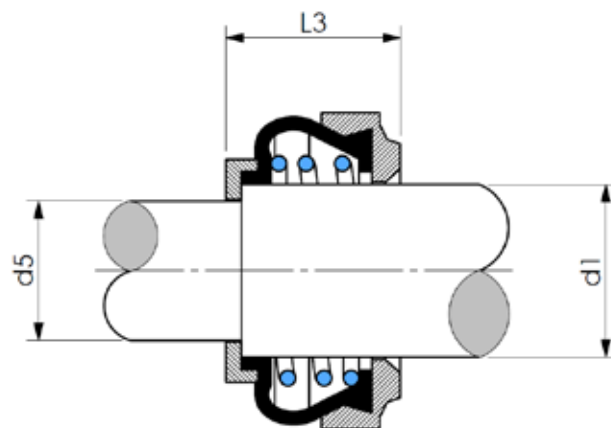
Pump type	Codification	Designation	d1	L3
FP / FL / FT...	LI-10334	LI FMT4 022 B E	22	20
	LI-10339	LI FMT4 030 B E	30	22
	LI-10333	LI FMT4 035 B E	35	26

## Materials :

- Rotary : Carbon (B)
- Elastomer : EPDM (E)
- Spring : Stainless Steel



# FRISTAM® - LI FMT5

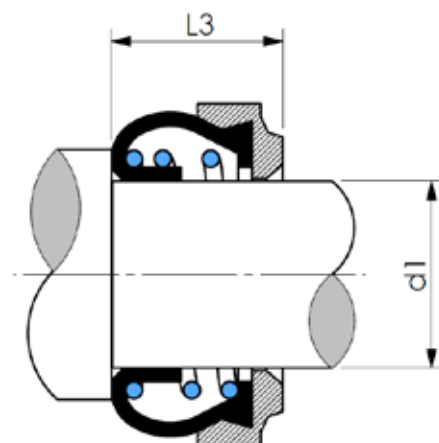


Pump type	Codification	Designation	d1	d5	L3
FP / FL / FT...	LI-10335	LI FMT5 022 B E	22	15	22
	LI-10338	LI FMT5 030 B E	30	22	24

## Materials :

- Rotary : Carbon (B)
- Elastomer : EPDM (E)
- Spring : Stainless Steel

# FRISTAM® - LI FMT6



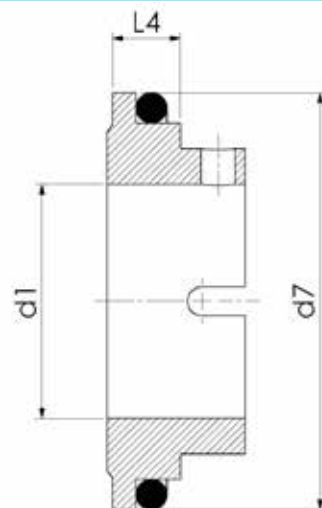
Pump type	Codification	Designation	d1	L3
FP / FL / FT...	LI-10340	LI FMT6 022 B E	22	20
	LI-10342	LI FMT6 030 B E	30	22

## Materials :

- Rotary : Carbon (B)
- Elastomer : EPDM (E)
- Spring : Stainless Steel



# FRISTAM® - LI FMF1

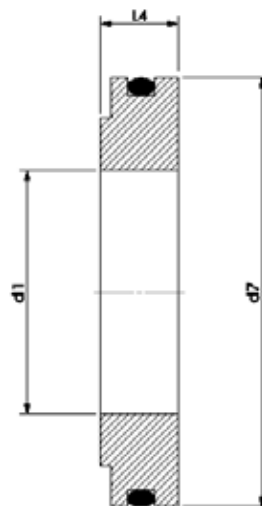


Pump type	Designation	Codification	d1	d7	L4
FP / FL / FT...	LI FMF1 022 S2 E	LI-10312	22	41,2	7,5
	LI FMF1 022 U3 E	LI-10313			
	LI FMF1 030 S2 E	LI-10314	30	48	7,6
	LI FMF1 030 U3 E	LI-10315			
	LI FMF1 035 S2 E	LI-10316	35	55,5	8,6
	LI FMF1 035 U3 E	LI-10317			

## Materials :

- Seat : Stainless Steel (S2) or Silicon Carbide (U3)
- Elastomer : EPDM (E)

# FRISTAM® - LI FMF2

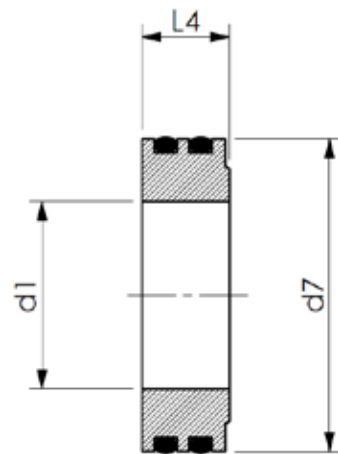


Pump type	Designation	Codification	d1	d7	L4
FP / FL / FT...	LI FMF2 022 S2 E	LI-10318	22	41,2	7,5
	LI FMF2 022 U3 E	LI-10319			
	LI FMF2 030 S2E	LI-10320	30	48	7,6
	LI FMF2 030 U3 E	LI-10321			
	LI FMF2 035 S2 E	LI-10322	35	55,5	8,6
	LI FMF2 035 U3 E	LI-10323			

## Materials :

- Seat : Stainless Steel (S2) or Silicon Carbide (U3)
- Elastomer : EPDM (E)

# FRISTAM® - LI FMF3

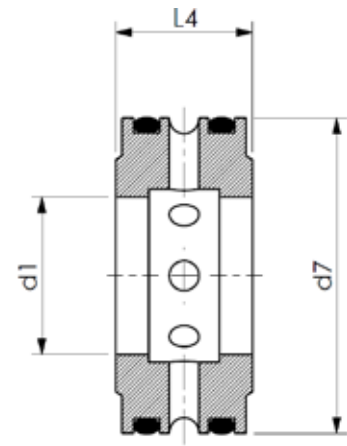


Pump type	Codification	Designation	d1	d7	L4
FP / FL / FT...	LI-10330	LI FMF3 030 S2 E	30	50	14
	LI-10331	LI FMF3 030 U3 E			

## Materials :

- Seat : Stainless Steel (S2) or Silicon Carbide (U3)
- Elastomer : EPDM (E)

# FRISTAM® - LI FMF4

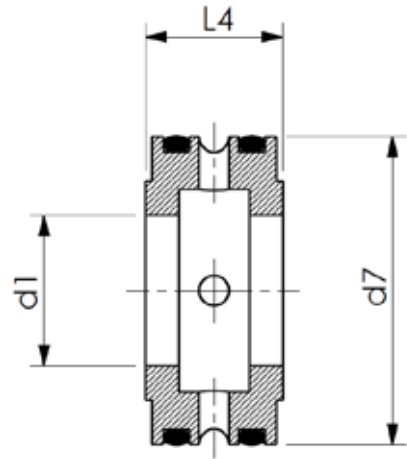


Pump type	Codification	Designation	d1	d7	L4
FP / FL / FT...	LI-10344	LI FMF4 030 S2 E	30	60	26
	LI-10345	LI FMF4 030 U3 E			
	LI-10341	LI FMF4 035 S2 E	35	70	26
	LI-10332	LI FMF4 035 U3 E			

## Materials :

- Seat : Stainless Steel (S2) or Silicon Carbide (U3)
- Elastomer : EPDM (E)

## FRISTAM® - LI FMF5

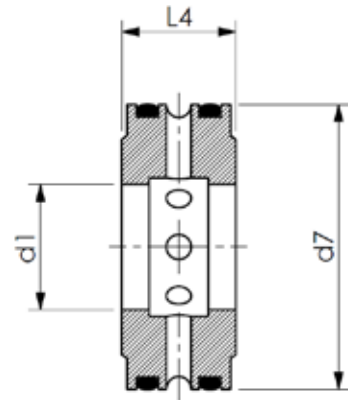


Pump type	Codification	Designation	d1	d7	L4
FP / FL / FT...	LI-10336	LI FMF5 022 S2 E	22	45	20
	LI-10346	LI FMF5 022 U3 E			

### Materials :

- Seat : Stainless Steel (S2) or Silicon Carbide (U3)
- Elastomer : EPDM (E)

# FRISTAM® - LI FMF6



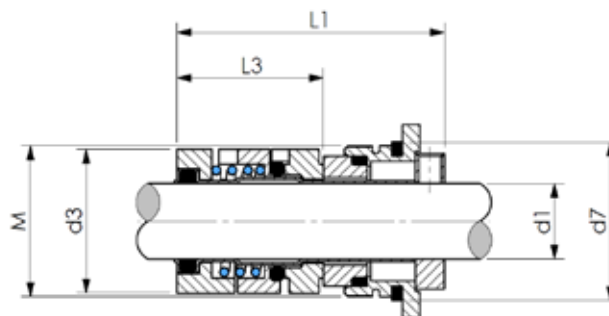
Pump type	Codification	Designation	d1	d7	L4
FP / FL / FT...	LI-10347	LI FMF6 022 S2 E	22	50	20
	LI-10348	LI FMF6 022 U3 E			

## Materials :

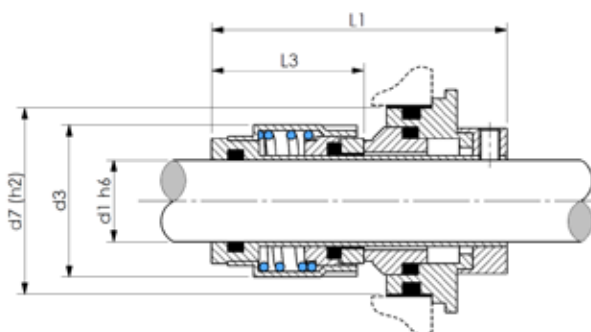
- Seat : Stainless Steel (S2) or Silicon Carbide (U3)
- Elastomer : EPDM (E)

# GRUNDFOS® - LI GS

d1 = 12 et 16



d1 = 22



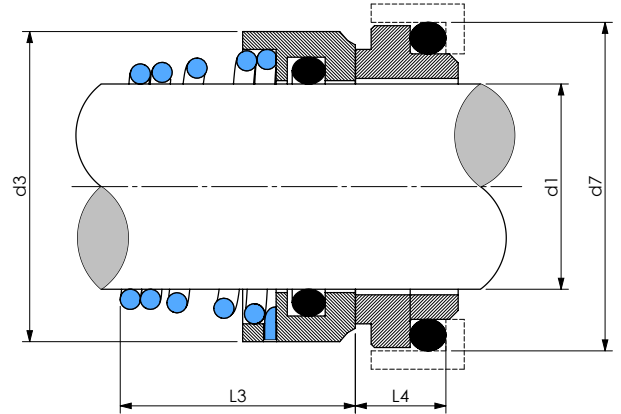
Pump type	Designation	Codification	d1	d3	M	d7	L1	L3
CR, CR8, CRI, CRN1, CRN3, CRN5, CRNE1, CRNE3-23HS	LI GS 012 U2 U2 E	LI-10400	12	25	M28x1.5	29	55	30
CR, CRI, CRN10, CRN15, CRN20	LI GS 016 U2 U2 E	LI-10401	16	30.5	M33x1.5	34	57.5	30.5
CR, CRN32, CRN45, CRN64, CRN90	LI GS 022 U2 U2 E	LI-10402	22	42	-	50	72	37

## Materials :

- Seat : Tungsten Carbide (U2)
- Rotary : Tungsten Carbide (U2)
- Elastomer : EPDM (E)
- Spring : Stainless Steel



# SIHI® - LI SID

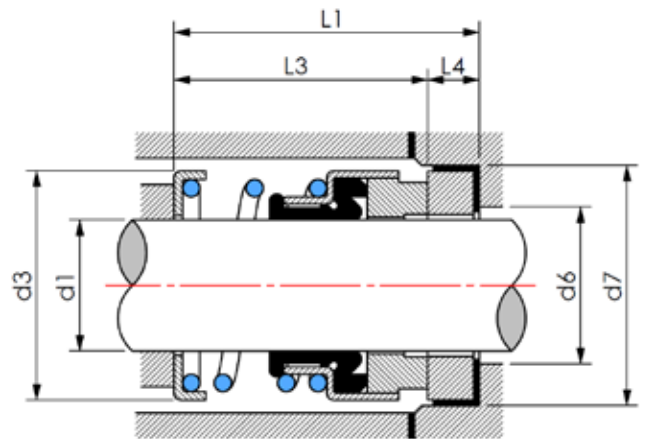


Designation	Codification	d1	d3	d7	L3	L4	Spring
LI SID 028 S2 B E RH	LI-11000	28	40	43	29	10	RIGHT
LI SID 038 S2 B E RH	LI-11001	38	53	56	42	13	RIGHT
LI SID 038 S2 B E LH	LI-11002						LEFT
LI SID 043 S2 B E RH	LI-11019	43	59	61	47	13	RIGHT
LI SID 043 S2 B E LH	LI-11020						LEFT

## Materials :

- Seat : Carbon (B)
- Rotary : Stainless Steel (S2)
- Elastomer : EPDM (E)
- Spring : Stainless Steel

# TYPE 511



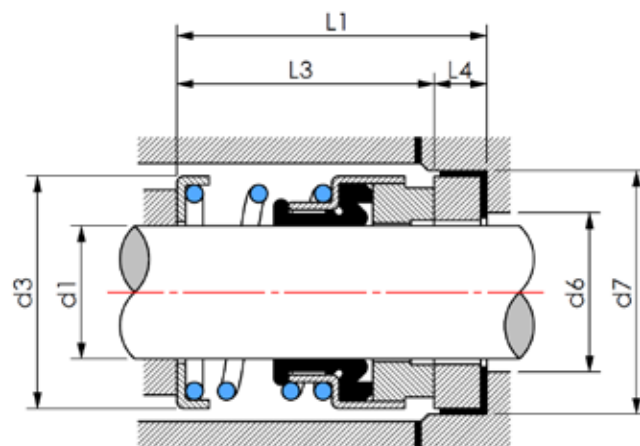
d1	d3	d6	d7	L1	L3	L4
20	33,4	27	35,7	54	43,7	10,3
22	33,4	28,6	37,3	54	43,7	10,3
24 - 25	39,2	31,8	40,5	54	43,7	10,3
28	46,3	35,7	47,6	72,3	60,3	12
30 - 32	49,4	38,9	50,8	72,3	60,3	12
33 - 34 - 35	52,6	42,1	54	72,3	60,3	12
38	55,8	45,2	57,2	72,3	60,3	12
40	62,2	48,8	60,4	72,3	60,3	12
42 - 43 - 44 - 45	66	51,6	63,5	82,6	70,6	12
48	66,6	54,8	66,7	82,6	70,6	12
50	71,7	58	69,9	82,6	70,6	12
53	73,3	62	73,1	84,5	71	13,5
55	78,4	65	76,2	84,5	71	13,5
58 - 60	82	68	79,4	84,5	71	13,5
63	54,9	71,2	82,6	84,5	71	13,5
65	88,4	78,4	92,1	85,9	70	15,9
70	92,6	81,1	95,3	85,9	70	15,9

## Materials :

- Seat : Ceramic (V) or Silicon Carbide (U3)
- Rotary : Carbon (B) or Silicon Carbide (U3)
- Elastomer : EPDM (E) or VITON (V)
- Spring : Stainless Steel

*\* Other sizes, materials and other imperial dimensions on request*

# TYPE 513



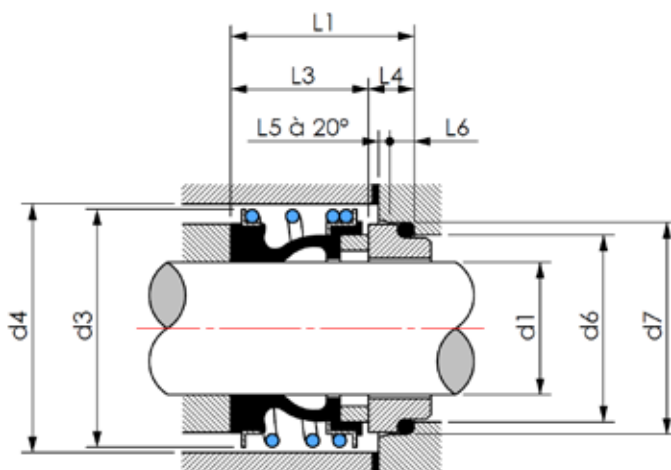
d1	d3	d6	d7	L1	L3	L4
20	33,4	27	35,7	35,7	25,4	10,3
22	33,4	28,6	37,3	35,7	25,4	10,3
24 - 25	39,2	31,8	40,5	35,7	25,4	10,3
28	46,3	35,7	47,6	45,3	33,3	12
30 - 32	49,4	38,9	50,8	45,3	33,3	12
33 - 34 - 35	52,6	42,1	54	45,3	33,3	12
38	55,8	45,2	57,2	45,3	33,3	12
40	62,2	48,8	60,4	45,3	33,3	12
42 - 43 - 45	66	51,6	63,5	52,5	40,5	12
48	66,6	54,8	66,7	52,5	40,5	12
50	71,7	58	69,9	52,5	40,5	12
53	73,3	62	73,1	54,5	41	13,5
55	78,4	65	76,2	54,5	41	13,5
58 - 60	82	68	79,4	54,5	41	13,5
63	84,9	71,2	82,6	54,5	41	13,5
65	88,4	78,4	92,1	64,9	49	15,9
70	92,6	81,1	95,3	64,9	49	15,9

## Materials :

- Seat : Ceramic (V) or Silicon Carbide (U3)
- Rotary : Carbon (B) or Silicon Carbide (U3)
- Elastomer : EPDM (E) or VITON (V)
- Spring : Stainless Steel

*\*Other diameters, materials and other imperial dimensions on request*

# TYPE 521



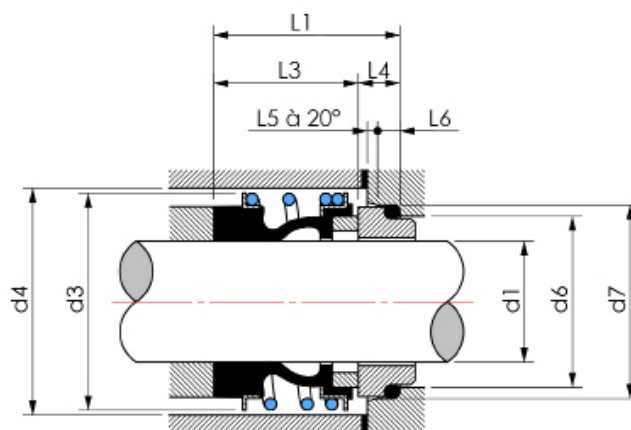
d1	d3	d4	d6	d7	L1	L3	L4	L5	L6
12	24	25	19	23	21,6	15	6,6	1,5	4
15 - 16	28	29	23	27	23,6	17	6,6	1,5	4
20	36	37	29	35	29	21,5	7,5	2	5
22	36	37	31	37	29	21,5	7,5	2	5
24	40,5	42	33	39	30	22,5	7,5	2	5
25	41	42	34	40	30,5	23	7,5	2	5
28 - 30	47	48	37	43	34	26,5	7,5	2	5
32 - 33	51	52	42	48	35	27,5	7,5	2	5
35	55	57	44	50	36	28,5	7,5	2	5
38	58	60	49	56	39	30	9	2	6
40	60	62	51	58	39	30	9	2	6
43	63	65	54	61	39	30	9	2	6
45	65	67	56	63	39	30	9	2	6
48	69	71	59	66	39,5	30,5	9	2	6
50	71	73	62	70	40	30,5	9,5	2,5	6
53	76	78	65	73	44	33	11	2,5	6
55	78	80	67	75	46	35	11	2,5	6
58	82	84	70	78	48	37	11	2,5	6
60	85	87	72	80	49	38	11	2,5	6
65	90	92	77	85	51	40	11	2,5	6
68	94	96	81	90	51,3	40	11,3	2,5	7

## Materials :

- Seat : Ceramic (V) or Silicon Carbide (U3)
- Rotary : Carbon (B) or Silicon Carbide (U3)
- Elastomer : EPDM (E) or VITON (V)
- Spring : Stainless Steel

*\*Other diameters, and materials on request*

# TYPE 522



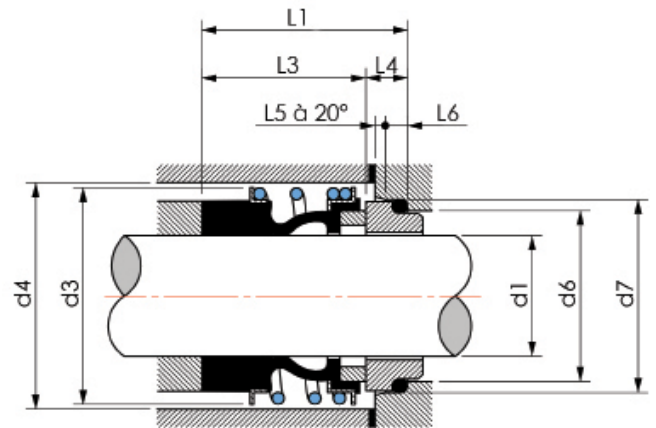
d1	d3	d4	d6	d7	L1	L3	L4	L5	L6
20	36	37	29	35	37,5	30	7,5	2	5
22	36	37	31	37	37,5	30	7,5	2	5
24	40,5	42	33	39	40	32,5	7,5	2	5
25	41	42	34	40	40	32,5	7,5	2	5
28	47	48	37	43	42,5	35	7,5	2	5
30	47	48	39	45	42,5	35	7,5	2	5
32 - 33	51	52	42	48	42,5	35	7,5	2	5
35	55	57	44	50	42,5	35	7,5	2	5
38	58	60	49	56	45	36	9	2	6
40	60	62	51	58	45	36	9	2	6
43	63	65	54	61	45	36	9	2	6
45	65	67	56	63	45	36	9	2	6
48	69	71	59	66	45	36	9	2	6
50	71	73	62	70	47,5	38	9,5	2,5	6
53	76	78	65	73	47,5	36,5	11	2,5	6
55	78	80	67	75	47,5	36,5	11	2,5	6
58	82	84	70	78	52,5	41,5	11	2,5	6
60	85	87	72	80	52,5	41,5	11	2,5	6
65	90	92	77	85	52,5	41,5	11	2,5	6
68	94	96	81	90	60	48,7	11,3	2,5	7
70	97	99	83	92	60	48,7	11,3	2,5	7

## Materials :

- Seat : Ceramic (V) or Silicon Carbide (U3)
- Rotary : Carbon (B) or Silicon Carbide (U3)
- Elastomer : EPDM (E) or VITON (V)
- Spring : Stainless Steel

*\*Other diameters, and materials on request*

# TYPE 523



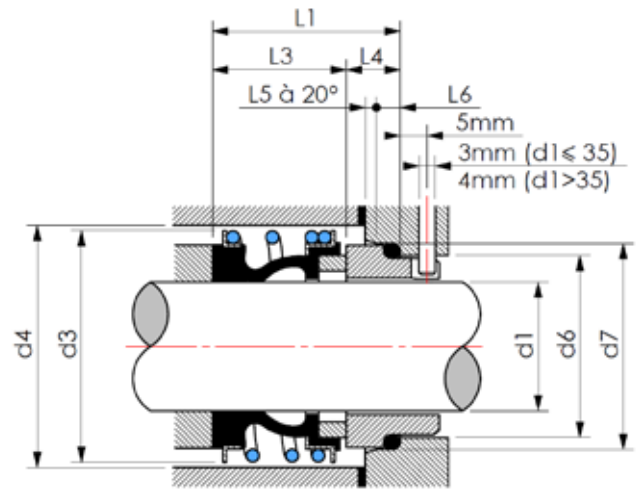
d1	d3	d4	d6	d7	L1	L3	L4	L5	L6
20	36	37	29	35	45	37,5	7,5	2	5
22	36	37	31	37	45	37,5	7,5	2	5
24	40,5	42	33	39	50	42,5	7,5	2	5
25	41	42	34	40	50	42,5	7,5	2	5
28	47	48	37	43	50	42,5	7,5	2	5
30	47	48	39	45	50	42,5	7,5	2	5
32 - 33	51	52	42	48	55	42,5	7,5	2	5
35	55	57	44	50	55	42,5	7,5	2	5
38	58	60	49	56	55	46	9	2	6
40	60	62	51	58	55	46	9	2	6
43	63	65	54	61	60	51	9	2	6
45	65	67	56	63	60	51	9	2	6
48	69	71	59	66	60	51	9	2	6
50	71	73	62	70	60	50,5	9,5	2,5	6
53	76	78	65	73	70	59	11	2,5	6
55	78	80	67	75	70	59	11	2,5	6
58	82	84	70	78	70	59	11	2,5	6
60	85	87	72	80	70	59	11	2,5	6
65	90	92	77	85	80	69	11	2,5	6
68	94	96	81	90	80	68,7	11,3	2,5	7
70	97	99	83	92	80	68,7	11,3	2,5	7

## Materials :

- Seat : Ceramic (V) or Silicon Carbide (U3)
- Rotary : Carbon (B) or Silicon Carbide (U3)
- Elastomer : EPDM (E) or VITON (V)
- Spring : Stainless Steel

*\*Other diameters, and materials on request*

# TYPE 524



d1	d3	d4	d6	d7	L1	L3	L4	L5	L6
20	36	37	29	35	33	21,5	11,5	2	5
22	36	37	31	37	33	21,5	11,5	2	5
24	40,5	42	33	39	34	22,5	11,5	2	5
25	41	42	34	40	34,6	23	11,5	2	5
28	47	48	37	43	38	26,5	11,5	2	5
30	47	48	39	45	38	26,5	11,5	2	5
32 - 33	51	52	42	48	39	27,5	11,5	2	5
35	55	57	44	50	40	28,5	11,5	2	5
38	58	60	49	56	44	30	14	2	6
40	60	62	51	58	44	30	14	2	6
43	63	65	54	61	44	30	14	2	6
45	65	67	56	63	44	30	14	2	6
48	69	71	59	66	44,5	30,5	14	2	6
50	71	73	62	70	45,5	30,5	15	2,5	6
53	76	78	65	73	48	33	15	2,5	6
55	78	80	67	75	50	35	15	2,5	6
58	82	84	70	78	52	37	15	2,5	6
60	85	97	72	80	53	38	15	2,5	6
65	90	92	77	85	55	40	15	2,5	6
68	94	96	81	90	58	40	18	2,5	7
70	97	99	83	92	58	40	18	2,5	7

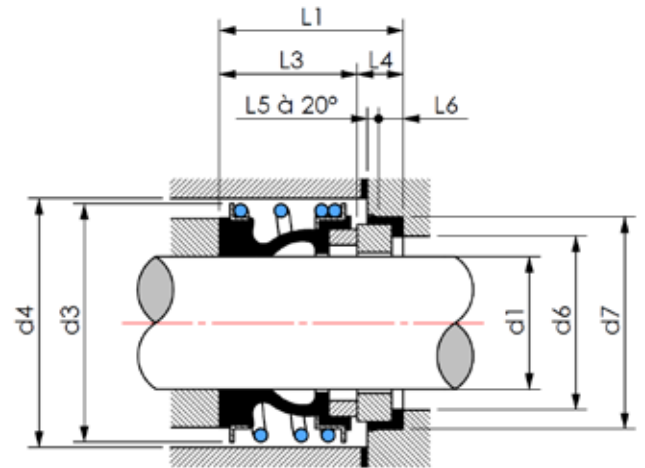
## Materials :

- Seat : Ceramic (V) or Silicon Carbide (U3)
- Rotary : Carbon (B) or Silicon Carbide (U3)
- Elastomer : EPDM (E) or VITON (V)
- Spring : Stainless Steel

*\*Other diameters, and materials on request*



# TYPE 525



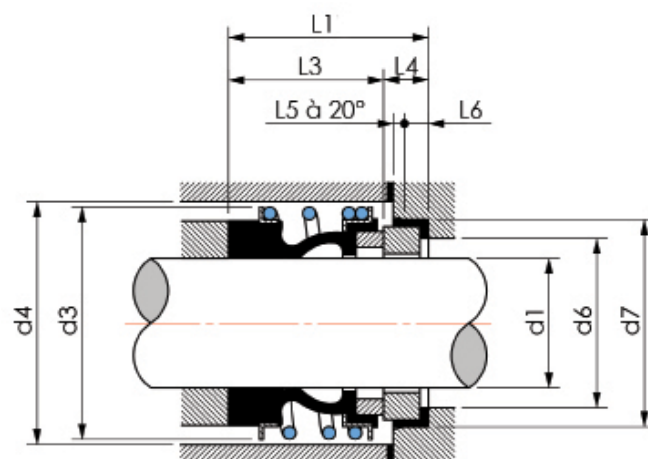
d1	d3	d4	d6	d7	L1	L3	L4	L5	L6
16	28	29	23	27	23,6	17	6,6	1,5	4
18	31	32	27	33	27	19,5	7,5	2	5
20	36	37	29	35	29	21,5	7,5	2	5
22	36	37	31	37	29	21,5	7,5	2	5
24	40,5	42	33	39	30	22,5	7,5	2	5
25	41	42	34	40	30,5	23	7,5	2	5
28	47	48	37	43	34	26,5	7,5	2	5
30	47	48	39	45	34	26,5	7,5	2	5
32 - 33	51	52	42	48	35	27,5	7,5	2	5
35	55	57	44	50	36	28,5	7,5	2	5
38	58	60	49	56	39	30	9	2	6
40	60	62	51	58	39	30	9	2	6
43	63	65	54	61	39	30	9	2	6
45	65	67	56	63	39	30	9	2	6
48	69	71	59	66	39,5	30,5	9	2	6
50	71	73	62	70	40	30,5	9,5	2,5	6
53	76	78	65	73	44	33	11	2,5	6
55	78	80	67	75	46	35	11	2,5	6
58	82	84	70	78	48	37	11	2,5	6
60	85	87	72	80	49	38	11	2,5	6
65	90	92	77	85	51	40	11	2,5	6
68	94	96	81	90	51,3	40	11,3	2,5	7
70	97	99	83	92	51,3	40	11,3	2,5	7
80	108	111	95	105	52	40	12	3	7

## Materials :

- Seat : Ceramic (V) or Silicon Carbide (U3)
- Rotary : Carbon (B) or Silicon Carbide (U3)
- Elastomer : EPDM (E) or VITON (V)
- Spring : Stainless Steel

*\*Other diameters, and materials on request*

# TYPE 526



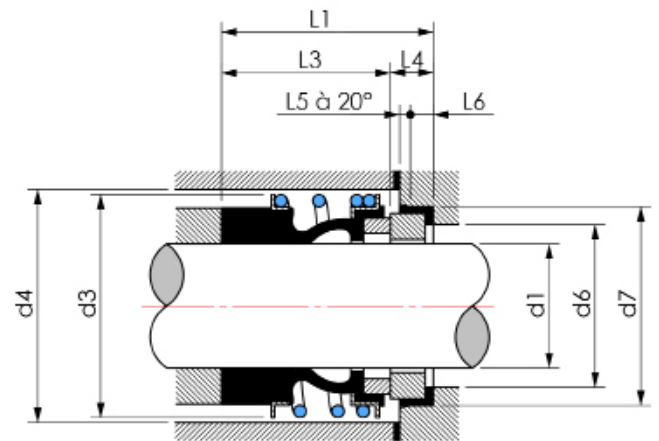
d1	d3	d4	d6	d7	L1	L3	L4	L5	L6
16	28	29	23	27	35	28,4	6,6	1,5	4
20	36	37	29	35	37,5	30	7,5	2	5
22	36	37	31	37	37,5	30	7,5	2	5
24	40,5	42	33	39	40	32,5	7,5	2	5
25	41	42	34	40	40	32,5	7,5	2	5
28	47	48	37	43	42,5	35	7,5	2	5
30	47	48	39	45	42,5	35	7,5	2	5
32 - 33	51	52	42	48	42,5	35	7,5	2	5
35	55	57	44	50	42,5	35	7,5	2	5
38	58	60	49	56	45	36	9	2	6
40	60	62	51	58	45	36	9	2	6
43	63	65	54	61	45	36	9	2	6
45	65	67	56	63	45	36	9	2	6
48	69	71	59	66	45	36	9	2	6
50	71	73	62	70	47,5	38	9,5	2,5	6
53	76	78	65	73	47,5	36,5	11	2,5	6
58	78	80	67	75	47,5	36,5	11	2,5	6
60	85	87	72	80	52,5	41,5	11	2,5	6
65	90	92	77	85	52,5	41,5	11	2,5	6
68	94	96	81	90	60	48,7	11,3	2,5	7
70	97	99	83	92	60	48,7	11,3	2,5	7

## Materials :

- Seat : Ceramic (V) or Silicon Carbide (U3)
- Rotary : Carbon (B) or Silicon Carbide (U3)
- Elastomer : EPDM (E) or VITON (V)
- Spring : Stainless Steel

*\*Other diameters, and materials on request*

# TYPE 527



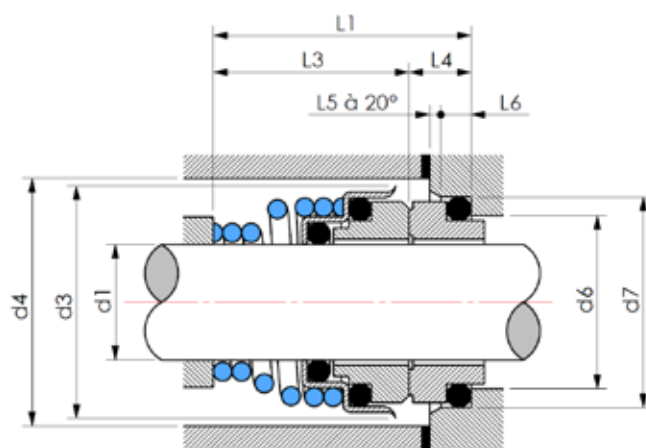
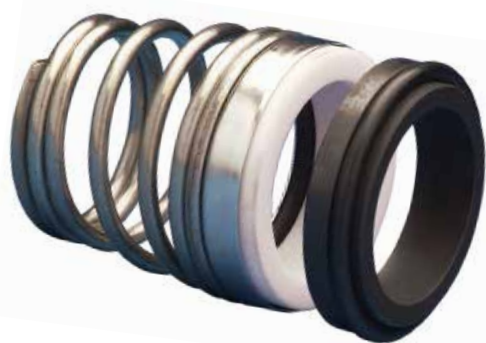
d1	d3	d4	d6	d7	L1	L3	L4	L5	L6
20	36	37	29	35	45	37,5	7,5	2	6
22	36	37	31	37	45	37,5	7,5	2	5
24	40,5	42	33	39	50	42,5	7,5	2	5
25	41	42	34	40	50	42,5	7,5	2	5
28	47	48	37	43	50	42,5	7,5	2	5
30	47	48	39	45	50	42,5	7,5	2	5
32 - 33	51	52	42	48	55	42,5	7,5	2	5
35	55	57	44	50	55	42,5	7,5	2	5
38	58	60	49	56	55	46	9	2	6
40	60	62	51	58	55	46	9	2	6
43	63	65	54	61	60	51	9	2	6
45	65	67	56	63	60	51	9	2	6
48	69	71	59	66	60	51	9	2	6
50	71	73	62	70	60	50,5	9,5	2,5	6
53	76	78	65	73	70	59	11	2,5	6
55	78	80	67	75	70	59	11	2,5	6
58	82	84	70	78	70	59	11	2,5	6
60	85	87	72	80	70	59	11	2,5	6
65	90	92	77	85	80	69	11	2,5	6
68	94	96	81	90	80	68,7	11,3	2,5	7
70	97	99	83	92	80	68,7	11,3	2,5	7

## Materials :

- Seat : Ceramic (V) or Silicon Carbide (U3)
- Rotary : Carbon (B) or Silicon Carbide (U3)
- Elastomer : EPDM (E) or VITON (V)
- Spring : Stainless Steel

*\*Other diameters, and materials on request*

# TYPE 534



d1	d3	d4	d6	d7	L1	L3	L4	L5	L6
10	20	21	17	21	22	15	7	1,5	4
12	22	23	19	23	25	18	7	1,5	4
14	24	25	21	25	29	22	7	1,5	4
16	26	27	23	27	30	23	7	1,5	4
18	32	33	27	33	34	24	10	2	5
20	33	34	29	35	35	25	10	2	5
22	36	37	31	37	35	25	10	2	5
24	37,4	39	33	39	37	27	10	2	5
25	38	39	34	40	37	27	10	2	5
28	42	43	37	43	39	29	10	2	5
30	44	45	39	45	40	30	10	2	5
32	45,5	47	42	48	40	30	10	2	5
33	46,5	48	42	48	49	39	10	2	5
35	49	50	44	50	49	39	10	2	5
38	56	58	49	56	55	42	10	2	5
40	58	60	51	58	55	42	10	2	5

## Materials :

- Seat : Carbon (B) or Silicon Carbide (U3)
- Rotary : Ceramic (V) or Silicon Carbide (U3)
- Elastomer : EPDM (E) or VITON (V)
- Spring : Stainless Steel

*\*Other diameters, and materials on request*



# NOTES



Lined area for taking notes, consisting of multiple horizontal lines within a blue border.



# NOTES



Lined area for writing notes, consisting of 30 horizontal lines within a blue border.

# Mechanical Seals OEM



MECASEAL<sup>®</sup> S.A.R.L.  
2, impasse du Crachet  
59193 ERQUINGHEM-LYS  
FRANCE  
Tél. : +33 (0)3 20 77 12 89  
Fax : +33 (0)3 20 77 20 35  
[customer.service@mecaseal.com](mailto:customer.service@mecaseal.com)



MECANETANCHE<sup>®</sup> S.A.S.  
174, rue des Saules  
38110 SAINT-JEAN-DE-SOUDAIN  
FRANCE  
Tél. : +33 (0)4 74 97 36 02  
Fax : +33 (0)4 74 97 36 66  
[customer.service@mecanetanche.com](mailto:customer.service@mecanetanche.com)

The information contained in catalogs and flyers whatever support are not binding LATTY group reserves the right to make changes.

[www.latty.com](http://www.latty.com)